

E8

Changing the filter

Approximate duration 3-5 min.

Equipment required:
JURA Filter Cartridge CLARIS
Smart



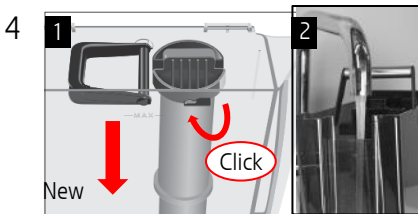
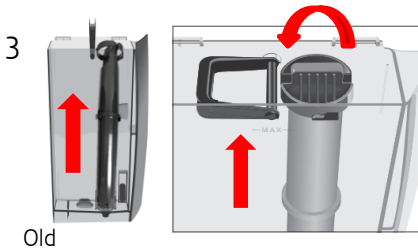
These short instructions do not replace the »E8 Instructions for Use«. Make sure you read and observe the safety information and warnings first in order to avoid hazards.

»Display«

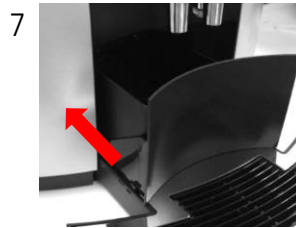
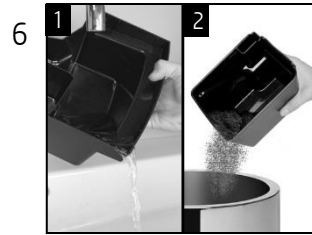
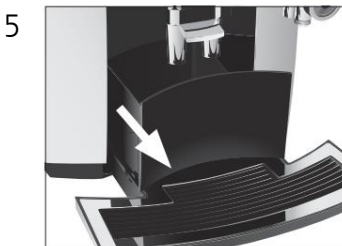


Precondition:

»Change filter«



»Saved«
»Filter is being rinsed«
»Empty drip tray«



»Filter rinsing completed«